

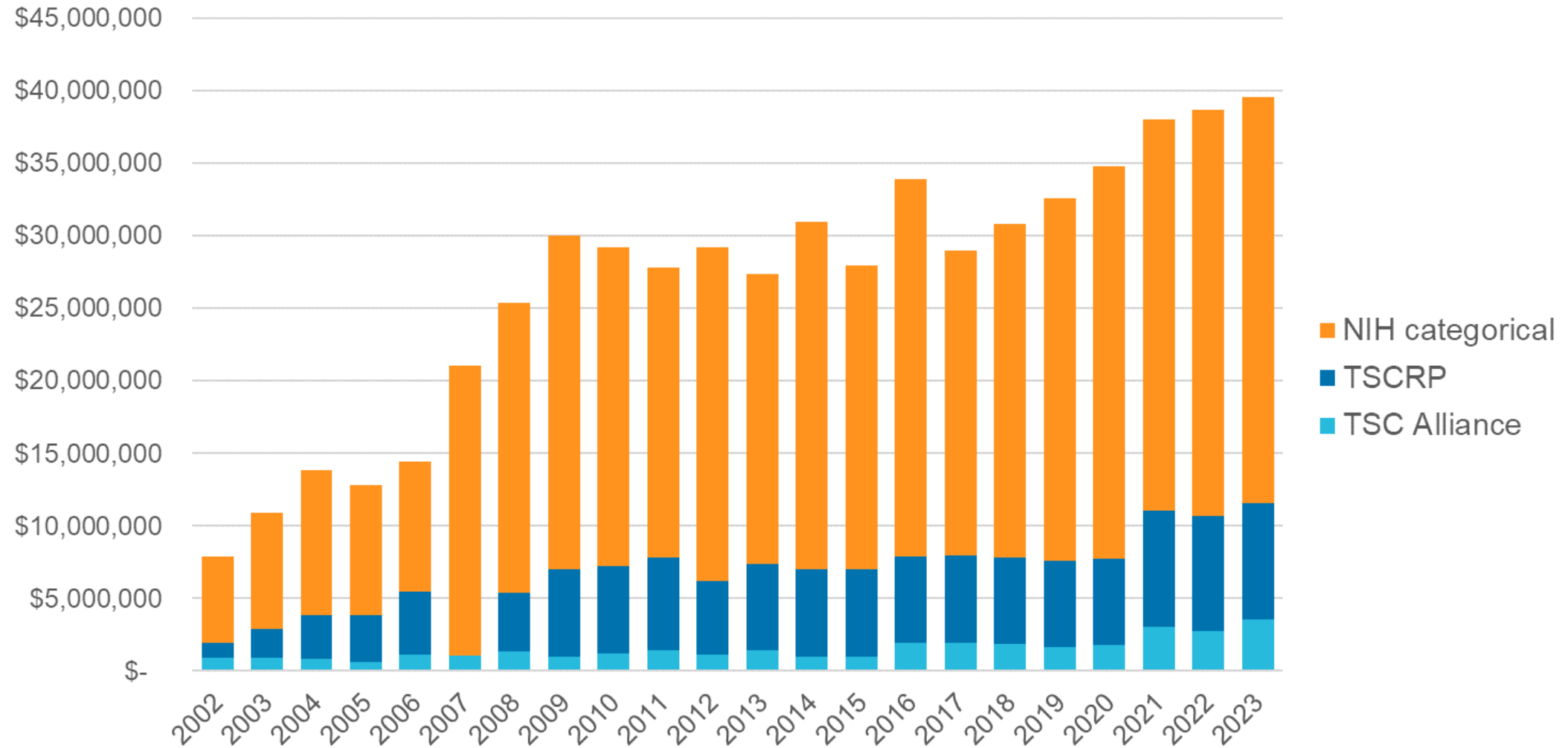
March on Capitol Hill Training Call

# TSCRP research update

February 13, 2024



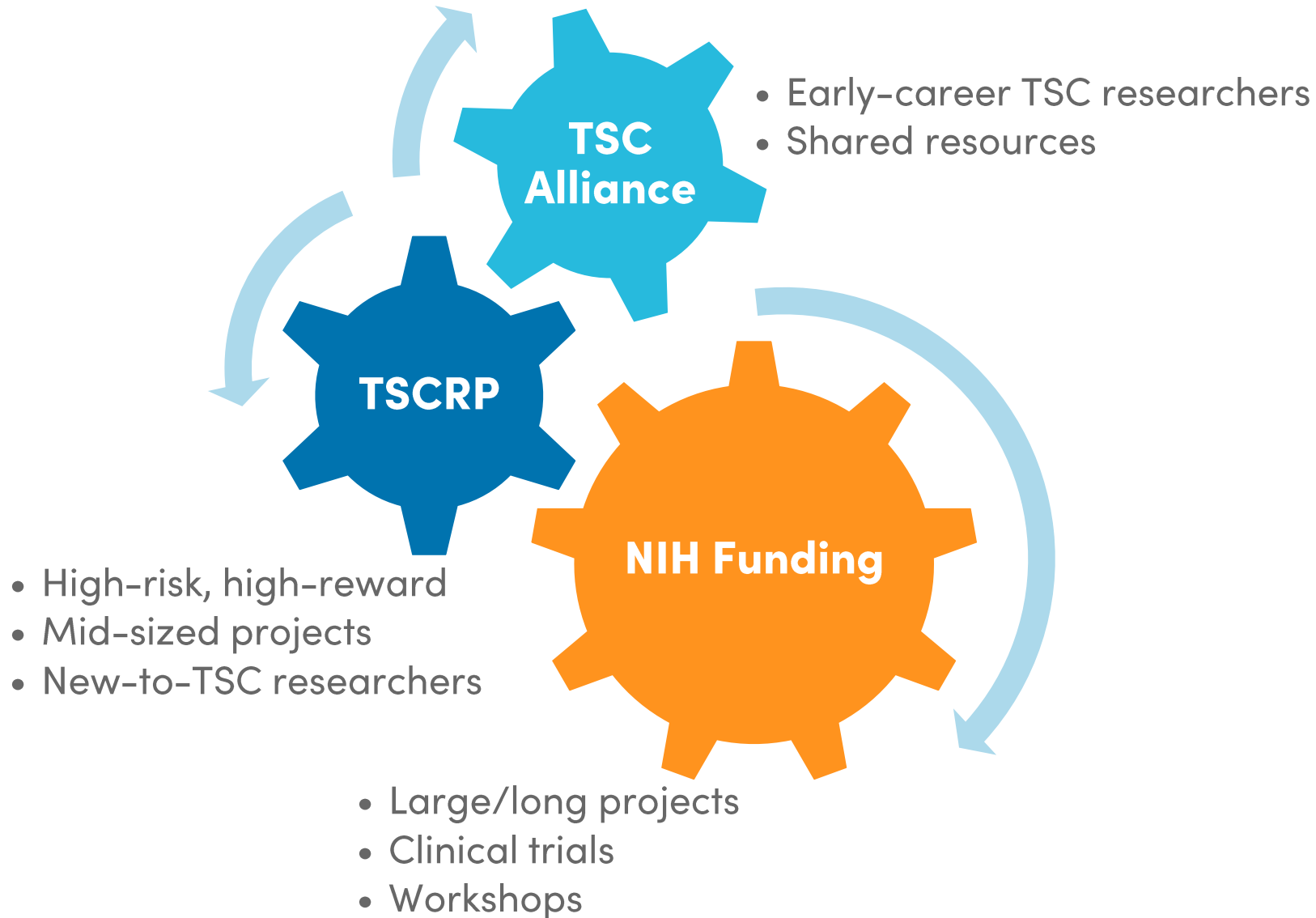
# Annual TSC research investments by NIH, TSCRP, TSC Alliance



# TSC Alliance research programs to accelerate development of new treatments



# TSCRP funding does not overlap with NIH or TSC Alliance



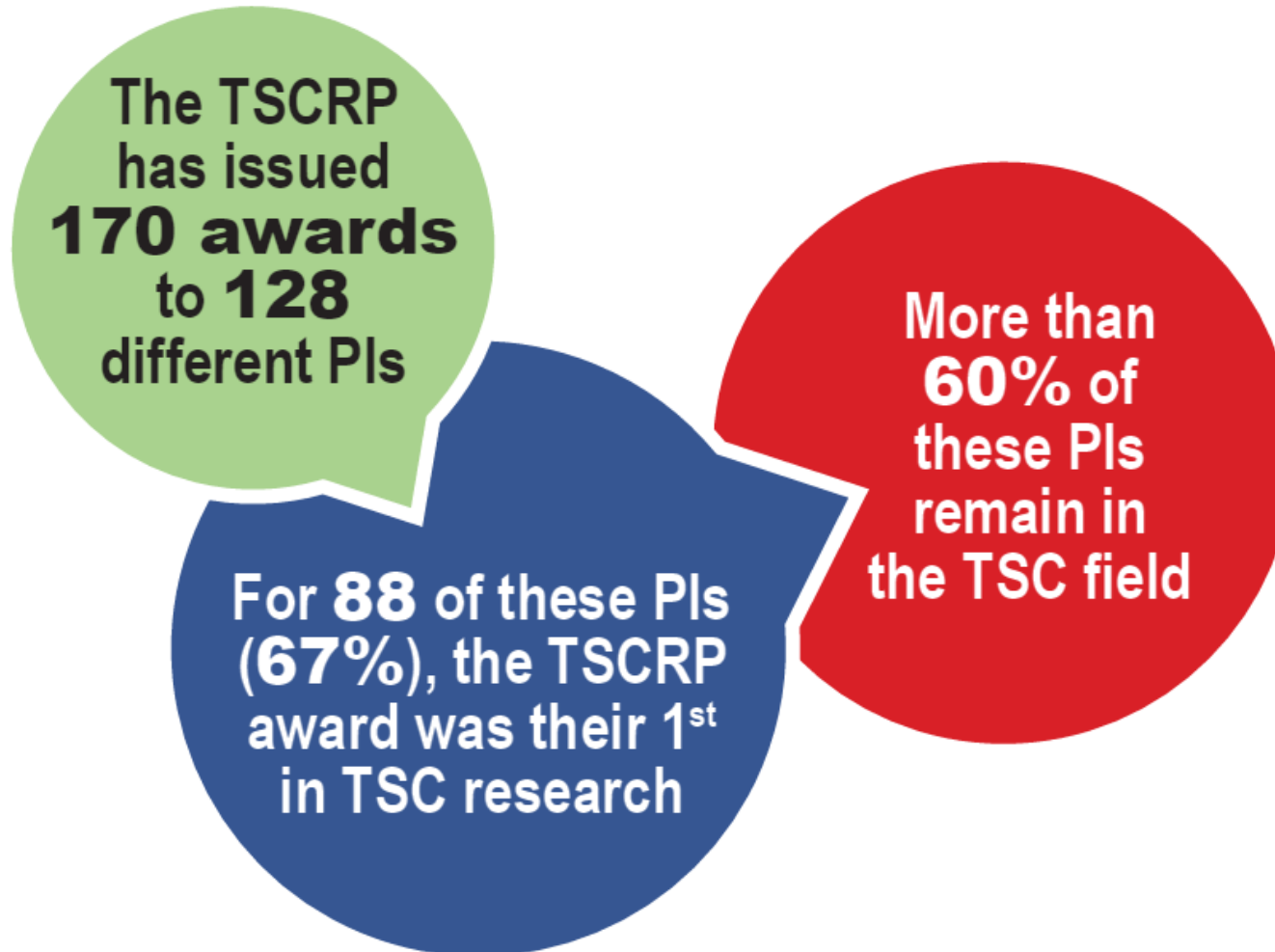
# NIH, TSCRP, and TSC Alliance communicate throughout the year

- NIH and TSC Alliance staff serve on TSCRP Programmatic Panel
- Biennial Trans-NIH Committee with TSCRP and TSC Alliance
- TSC Alliance meets annually with leaders of nine NIH institutes
- NIH, TSC Alliance, and TSCRP organized 2015 strategic research planning workshop
- Details of all awards are shared among all funders

# Unique role of the TSCRP

- Mission Statement: “**Support innovative and high-impact research** that promotes discoveries in TSC, from mechanistic insights to clinical application **across all ages**, by fostering new ideas and investigators for the benefit of Service members, their families, and the public.”
- **Includes community members** impacted by TSC on the Programmatic Panel and peer-review panels.
- **Annually included by Congress** in Department of Defense appropriations bill thanks to TSC community advocacy.

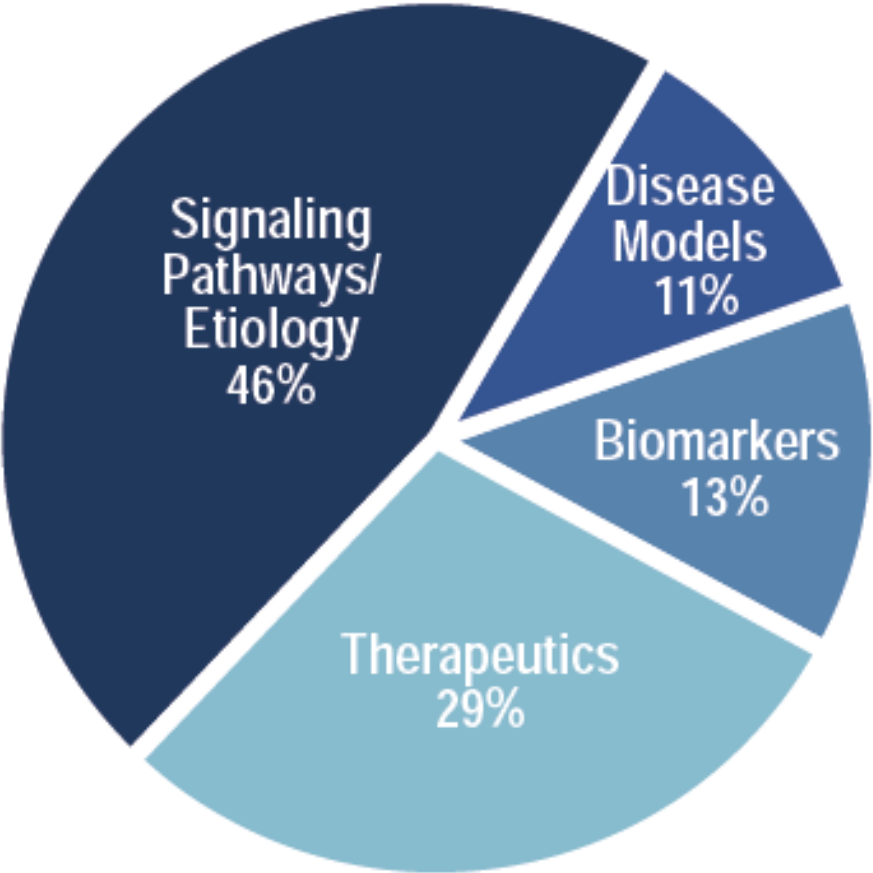
# TSCRP brings new investigators into the TSC field



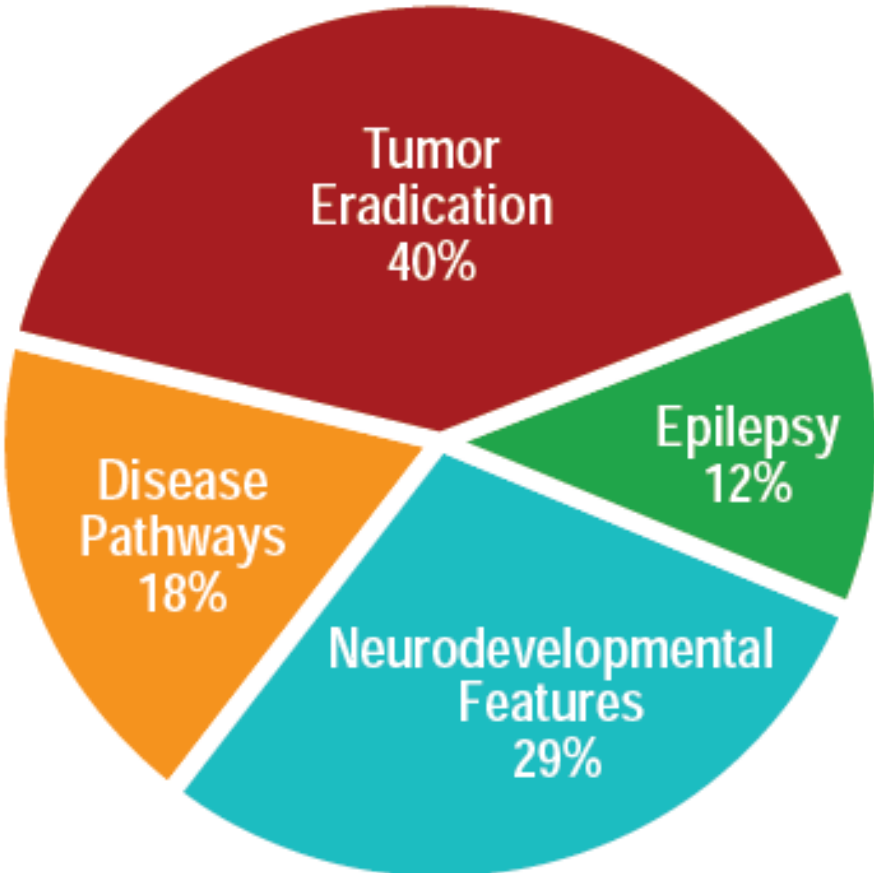
FY02-19

# Overview of TSCRP research investment portfolio

Types of research



Disease focus areas



FY14-19



# As a **linchpin disease**, investments in TSC have the potential to impact other diseases

## Neurology

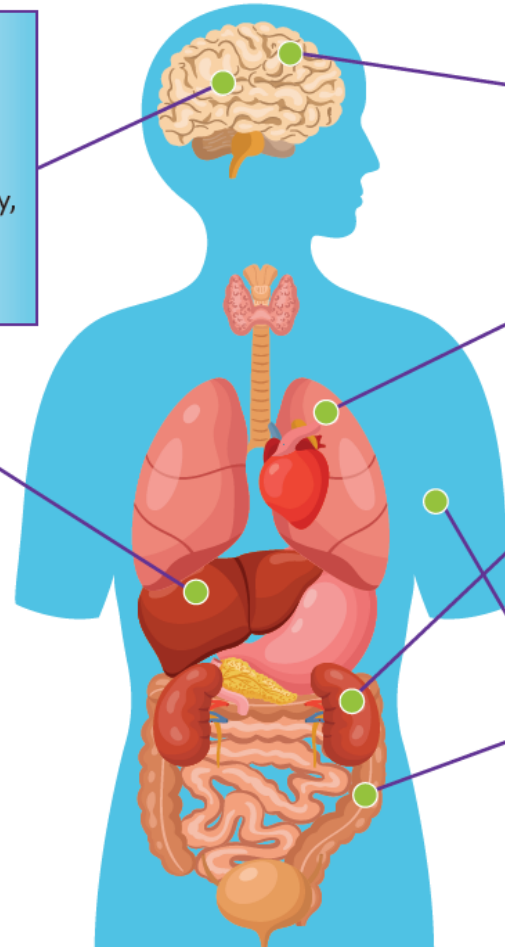
Epilepsy, Infantile Spasms, Traumatic Brain Injury, Autism Spectrum Disorder, Aggression Disorders, Speech & Language Delay, Cognitive Impairment, Eating & Sleep Disorders, Communication Disorders, Anxiety, Depression, Attention Deficit Disorder, Alzheimer's Disease, Parkinson's Disease, Huntington's Disease

## Metabolic Diseases

Non-Alcoholic Fatty Liver Syndrome, Cardiovascular Disease, Type II Diabetes

## Oncology

Malignant & Non-Malignant Brain Tumors, Megalocephaly, Skin Growths, Non-Malignant Heart Tumors, Irregular Pulmonary Growths, Retinal Lesions, Renal Cell Carcinoma



## mTORopathies

Focal Cortical Dysplasia, Polyhydramnios, Megalencephaly, Symptomatic Epilepsy Syndrome & Hemimegalencephaly

## Pulmonology

Lymphangiomyomatosis (LAM)

## Nephrology

Renal Cysts, Polycystic Kidney Disorder, Angiomyolipomas

## Autoimmune & Inflammation

Arthritis, Inflammatory Bowel Disease, Colitis, Crohn's Disease

**Cancer, epilepsy and Autism** – the largest most prevalent of such diseases – together affect **~27 million patients in the United States alone.**

# Driving TSC research and discoveries together

